

Grooved Flange Adapter

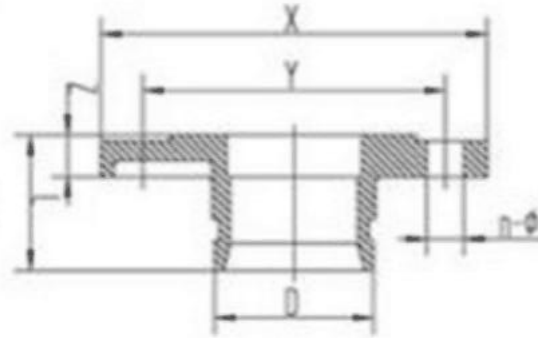


Grooved Flange Adapter details:

Name	Grooved Flange Adapter
HS Code	7307110000
Material	Ductile Iron/ Cast Iron ASTM A536, Grade 65-45-12 with Elongation 12% Min
Size	1"-12" or DN25-DN300
Finish	Epoxy/ painted Red, Blue, Orange, White
Standard	ANSI, GB, FM, UL, CCC
Pressure	230PSI----1.6MPa
Thread	BSPT, BSPP, NPT
Application	1. Fire fighting & fire sprinkler system for commercial and civil fire protection construction, such as water supplying, gas supplying, air-conditioning, etc 2. Industrial pipeline system in shipping, mine, oil field, cement, mine piping, chemical plant, etc 3. Ordinary piping delivery in sewage treatment, subway station, airport, seaport, bridge, etc
Packaging	Cartons with pallet or wooden case
Test	Leakage or pressure
Bolts & Nuts	Colorful Zn Plating; Bolts: Mechanical performance grade 8.8 Heavy Duty Nuts: Mechanical performance grade 8.8
Others	Grooved flange adapter, grooved pipe fittings, grooved elbow, grooved coupling, grooved tee, Tee, Elbow, Cross, Reducer, End cap, various valve, etc
Advantage	1. Automatic Vertical Production Line/ DISA Line 2. Painting in our factory 3. Automatic mold with high class tolerance and better finish 4. Testing the leakage or pressure per your orders 5. More than 15 years casting experience and 7 years trading experience

Baoding Guokun Machinery Co., Ltd

Size Specification:



Nominal Size (mm/in)	Pipe O.D (mm/in) D	Working Pressure (PSI/MPa)	Dimensions (mm/in)				Bolt Size
			L	X	Y	Z	
50 2	60.3 2.376	230/1.6	65 2.559	165 6.50	125 4.92	16 0.63	4-M16
65 2 1/2	76.1 3		65 2.559	185 7.28	145 5.7	16 0.63	4-M16
80 3	88.9 3.5		65 2.559	200 7.87	160 6.29	16 0.63	8-M16
100 4	108 4.25		70 2.756	220 8.66	180 7.08	16 0.63	8-M16
100 4	114.3 4.5		70 2.756	220 8.66	180 7.08	16 0.63	8-M16
125 5	133 5.25		70 2.756	250 9.84	210 8.26	18 0.71	8-M16
125 5	139.7 5.5		70 2.756	250 9.84	210 8.26	18 0.71	8-M16
150 6	159 6.25		70 2.756	282 11.10	240 9.44	18 0.71	8-M20
150 6	165.1 6.5		70 2.756	282 11.10	240 9.44	18 0.71	8-M20
150 6	168.3 6.625		70 2.756	282 11.10	240 9.44	18 0.71	8-M20
200 8	219.1 8.625		80 3.150	340 13.39	295 11.61	19 0.74	12-M20
250 10	273 10.75		85 3.346	405 15.94	355 13.97	21 0.82	12-M24
300 12	323.9 12.750		90 3.543	460 18.11	410 16.14	24 0.94	12-M24

Factory photos:

Web: www.guokuncasting.com

Email: gina@guokuncasting.com

Mobile: +86-18132789710

[Baoding Guokun Machinery Co., Ltd](#)



Web: www.guokuncasting.com

Email: gina@guokuncasting.com

Mobile: +86-18132789710